

**TENDER NOTICE**  
**ARMY PUBLIC SCHOOL, SAMBA**  
**Website apssamba.co.in, Mob : 9419267483**

Sealed tenders are hereby invited from reputed, experienced and financially sound contractors approved by the Govt, having adequate experience in construction work.

1. **Nature of work**. Setting up of 10 Meters Indoor Six Lane Air Rifle & Air Pistol Shooting Range at Army Public School Samba (J&K)
2. **Sale of Tender Documents** : 26 Aug 19 to 20 Sep 19(1400 h) (On payment of Rs 200/-) BOQ if downloaded from website to be accompanied with DD worth Rs 200/- in favour of Principal, Army Public School, Samba
3. **Earnest Money** . : Rs25000/-
4. **Period of Completion** : 2 ½ months (After approval of CFA)
5. BOQ accompanied with EMD, Certificate of Registration of contractor, GST registration Certificate, copy of PAN for TDS purpose, Experience Certificate, under firm's covering letter duly signed by the contractor and affixed with rubber stamp should be dropped in Tender Box placed at Main Gate of APS Samba latest by 25 Sep 2019 (1200 hrs) . All documents should be self-authenticated.

Date of opening : 25 Sep 2019 at 1400 hrs.

The Chairman Army Public School, Samba reserves the right to reject any or all the bids without assigning any reasons thereof.

(PRINCIPAL)

**BOQ FOR SETTING UP OF 10 METERS INDOOR SIX LANE AIR RIFLE &  
AIR PISTOL SHOOTING RANGE At ARMY PUBLIC SCHOOL, SAMBA (J&K)  
(SIZE 17.00M X 8.60M)**

S.No.	Particulars of Items	Qty(Cum/ Sqm).	Unit	Rate	Amount
"A"	J&K SSR-2012 Based Items				
1	Engagement of JCB for levelling of site.	6	hours		
2	Earth work in excavation by manual means in trenches for foundations, drains, pipes, cables etc. (Exceeding 30 cm and 1.5 Mtr in depth) and for shafts, wells, cesspits and the like not exceeding 10 Sqm on plan, width upto 1.5 Mtr. including disposal of excavated earth upto 1 Mtr. from cutting edge disposed earth is to be levelled and neatly dressed in all kinds of soil ( Code No 28 )	40.13	cum		
3	Filling available excavated earth ( excluding rock) in trenches, plinth, sides of foundation etc. in layers not exceeding 20 cm in depth, consolidating each deposited layer by ramming and watering lead upto 50m and lift upto 1.5 M ( Code No.212) qty @ 70% of item no -1	28.09	cum		
4	Supplying and filling in plinth with fine sand under floors including, watering rumming consolidating and dressing complete.( Code no 2.22 )	39.89	cum		
5	Providing and laying in position cement concrete of 1:4:8 grade (1 cement :4 fine sand : 8 graded stone aggregate 40mm nominal size) excluding the cost of centering and shuttering. All work upto plinth level ( Crushed) Code no 4.5.9 )	17.00	cum		
6	Brick work with F.P.S bricks of class designation 75m foundation and plinth in 1:6 cement mortar (1 cement :6 fine sand) (Code No.6.1.6)	40.46	cum		
7	Extra for brick work in superstructure above plinth level upto floor V level. (By manual means)	40.46	cum		

**BOQ FOR SETTING UP OF 10 METERS INDOOR SIX LANE AIR RIFLE &  
AIR PISTOL SHOOTING RANGE At ARMY PUBLIC SCHOOL, SAMBA (J&K)  
(SIZE 17.00M X 8.60M)**

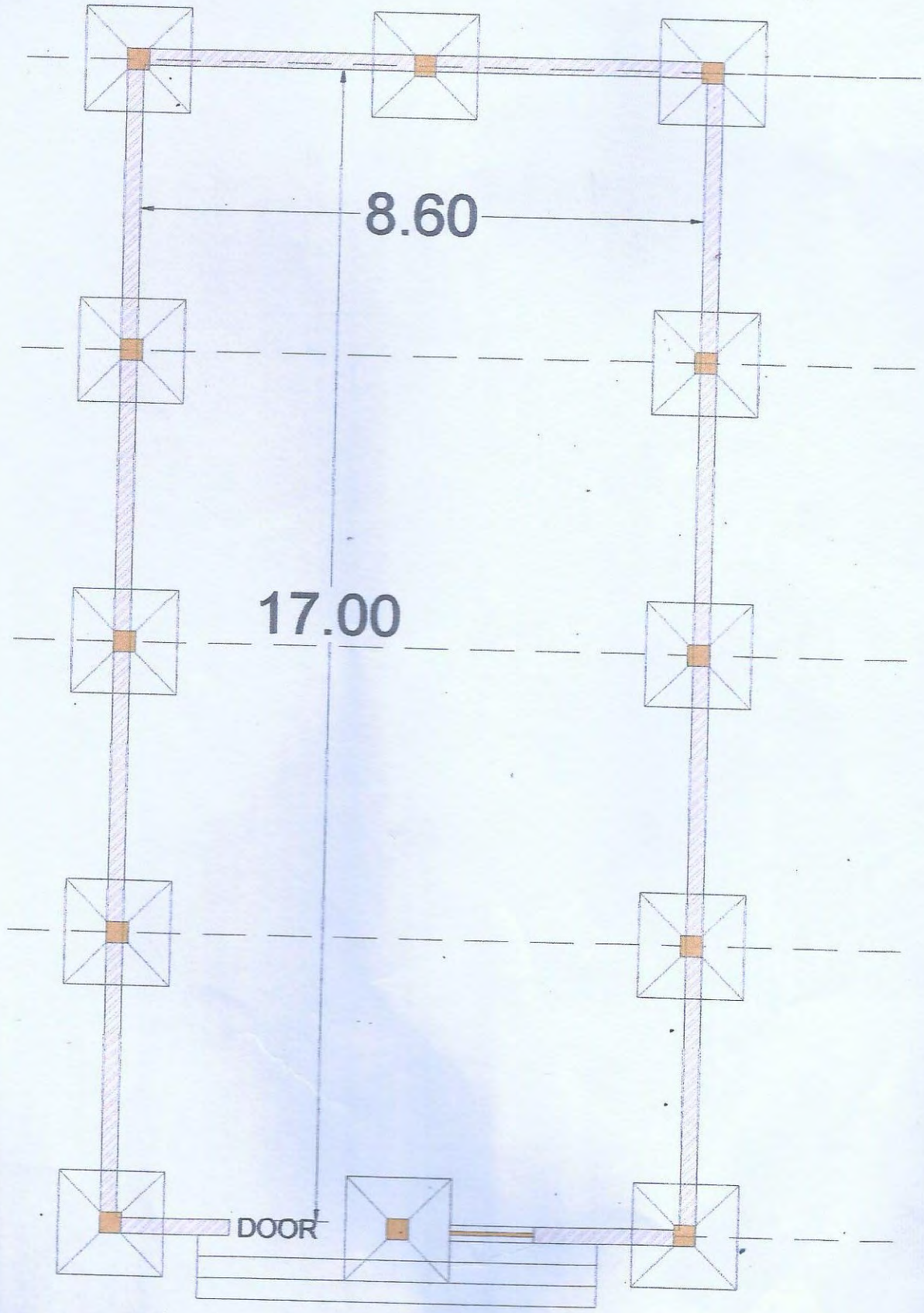
2

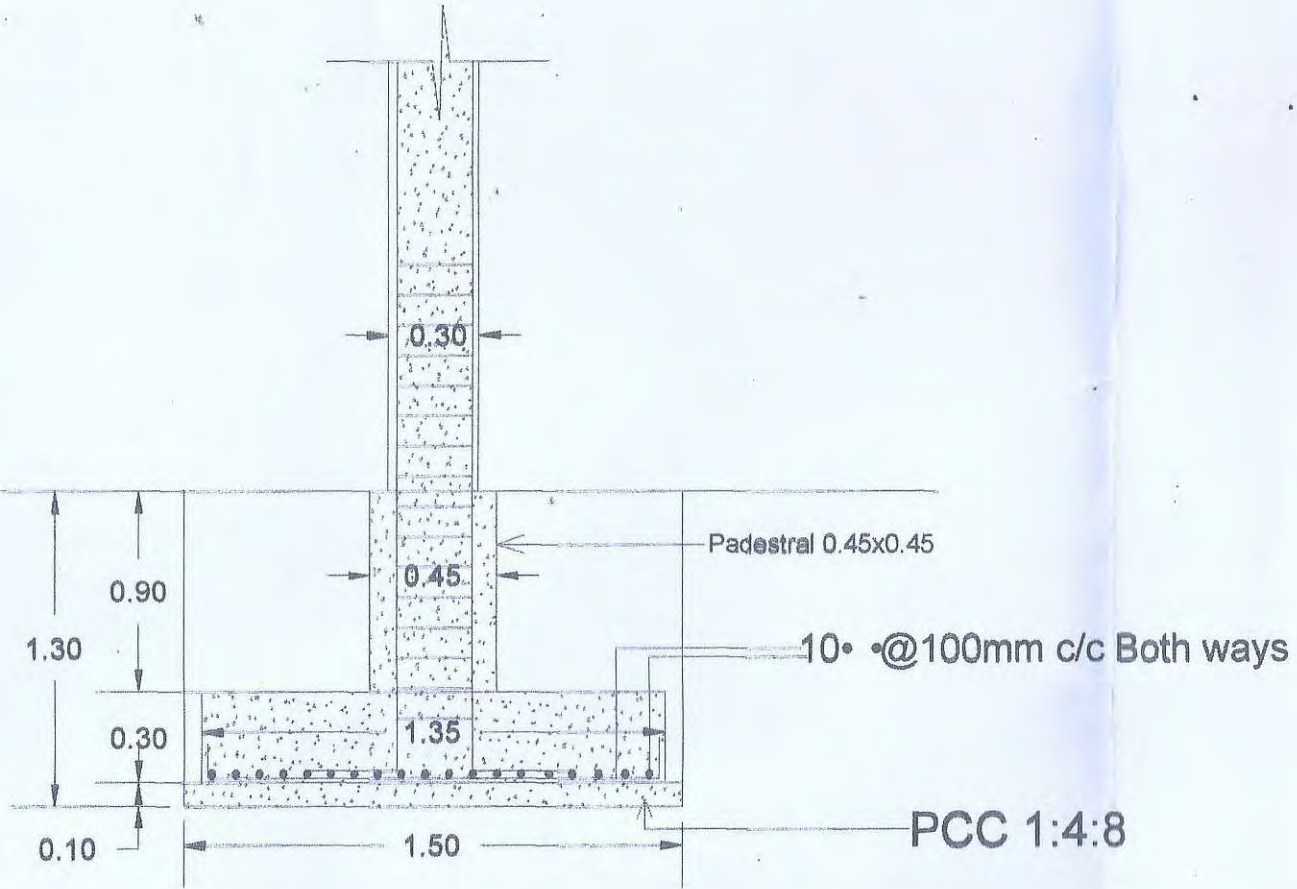
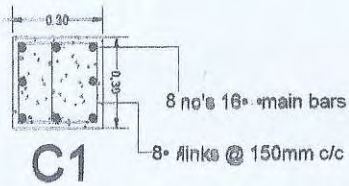
8	Providing and laying in Position reinforced cement concrete 1: 1.5 :3 ( 1 cement 1.5 coarse sand : 3 graded stone aggregate 20mm size ) in beams, cantilevers, suspended floors, lintels roof slab & shelves etc.) excluding centring shuttering finishing and reinforcement all work upto plinth level. (Footings and plinth beam) ( Code no 5.2.3 )							
		19.39						
9	Reinforcement for RCC work including straightening, cutting, bending, placing in position and binding all complete cold twisted bars. (Code No.5.22.3)		cum					
		2754.64	kg					
10	' A'Centering and shuttering including strutting, propping etc. and removal of form work for a. Foundations, footings, bases of columns (Code No.5.9.1)							
		182.52	sqm					
11	15mm cement plaster on rough side of single or half brick wall of mix 1:6 ( 1 cement : 6 fine sand) (Code No.13.2.2)							
		413.51	sqm					
12	P/F of aluminium doors and windows(complete job).							
		108.46	sft					
13	Structural steel work in built up section, trusses and framed work, including cutting, hoisting fixing in position and applying a priming coat of approved steel primer all complete.							
		3412.32	kg					
14	Providing corrugated G.S sheet roofing fixed with polymer coated J or L hooks, bolts and nuts 8mm diameter with bitumen and G.I limpet washers or with G.I limpet washers filled with white lead and including a coat of approved steel primer and two coats of approved paint on overlapping of steels complete (upto a pitch of 60 degrees), excluding the cost of purlins, rafters and trusses. 0.63mm thick.							
		216.75	sqm					
15	Distemping with dry distemper of approved brand and manufacture (two or more coats) and of required shade on new work over and including priming coat of whitening to give an even shade (Code No.13.51)							
		413.51	sqm					

**BOQ FOR SETTING UP OF 10 METERS INDOOR SIX LANE AIR RIFLE & AIR PISTOL SHOOTING RANGE At ARMY PUBLIC SCHOOL, SAMBA (J&K)**  
**(SIZE 17.00M X 8.60M)**

16	Providing and laying vitrified floor tiles in different sizes (thickness to be specified by the manufacturer) with water absorption less than 0.08% and conforming to IS: 15622 of approved make in all colours and shades, laid on 20mm thick cement mortar 1:4 (1 cement :4 coarse sand) including grouting the joints with white cement and matching pigments etc. complete Size of tile 50x50cm.				
		132.98	sqm		
17	Making plinth protection 50mm thick of cement concrete 1:3:6 over 75mm bed of dry brick ballast 40mm nominal size well rammed and consolidated and granted with fine sand including finishing the top smooth (Crushed) (Code No.16.1)				
		32.04	sqm		
18	Providing and fixing 600x600mm plaster of Paris (gypsum anhydrous) ceiling tiles	1554.82	sft		
19	Providing and fixing ceiling lights of 600x600mm of jaquar made or equivalent brand.	45.00	nos		
20	Providing and fixing ceiling fans of approved brand.	4.00	nos		
			<b>TOTAL = A</b>		
21	Providing and fixing of copper wire ,MCB,SPN,Switches and conducting,steel box for 2 nos 1.50 TON AC,45 no's celing lights and 4 no's ceiling fans. @ 3% <b>OF A</b>				
			<b>G.TOTAL</b>		

TYPICAL PLAN FOR CONSTRUCTION OF SHOOTING RANGE SHED AT ARMY PUBLIC SCHOOL SAMBA.





**DETAIL OF FOOTING F1**